

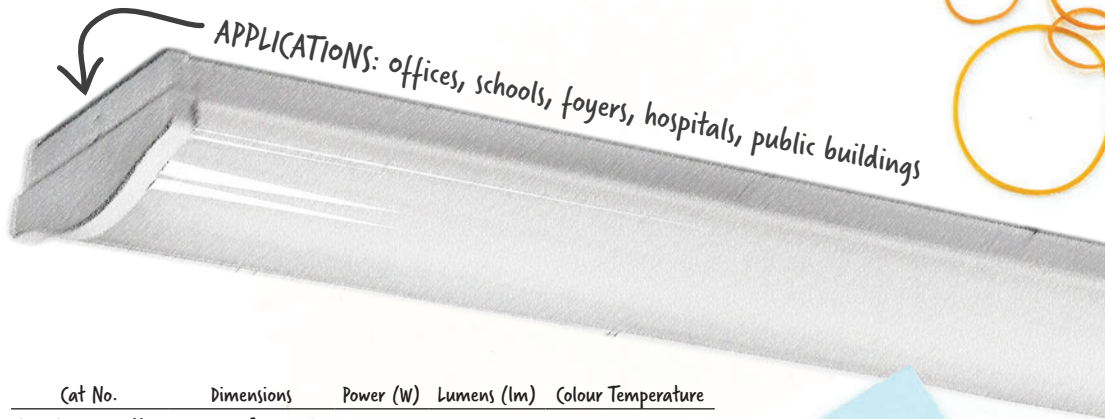


LV JUICE

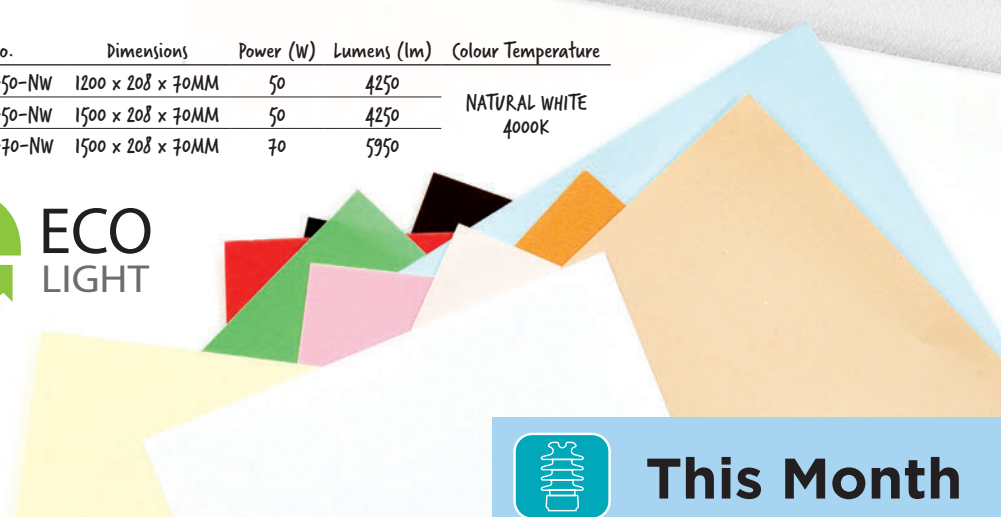
LIGHT UP YOUR WORKSPACE

LED LINEAR OFFICE & SCHOOL LIGHTS

The LEDOL linear office & school light comes with powder-coated white aluminium body & opaque acrylic lens, and has length & lumen output options available depending on project requirement. This fitting is designed for flush mounting to ceilings and walls or suspension, and the osram driver is inbuilt with internal Wago quick disconnecter.



Cat No.	Dimensions	Power (W)	Lumens (lm)	Colour Temperature
LEDOL1200-50-NW	1200 x 208 x 70MM	50	4250	NATURAL WHITE 4000K
LEDOL1500-50-NW	1500 x 208 x 70MM	50	4250	
LEDOL1500-70-NW	1500 x 208 x 70MM	70	5950	



This Month

UTILUX CABLE
MANAGEMENT

PAGE 2

ECOPILLAR
DISTRIBUTION SERVICE
PILLARS

PAGE 4

NEW PRODUCT! POP N'
WORK POP-UP SHELTERS

PAGE 8

FREE BAG OF MINI PEBBLES

WHILE STOCKS LAST

When you spend
over \$300 (excl
GST) on one
invoice this month





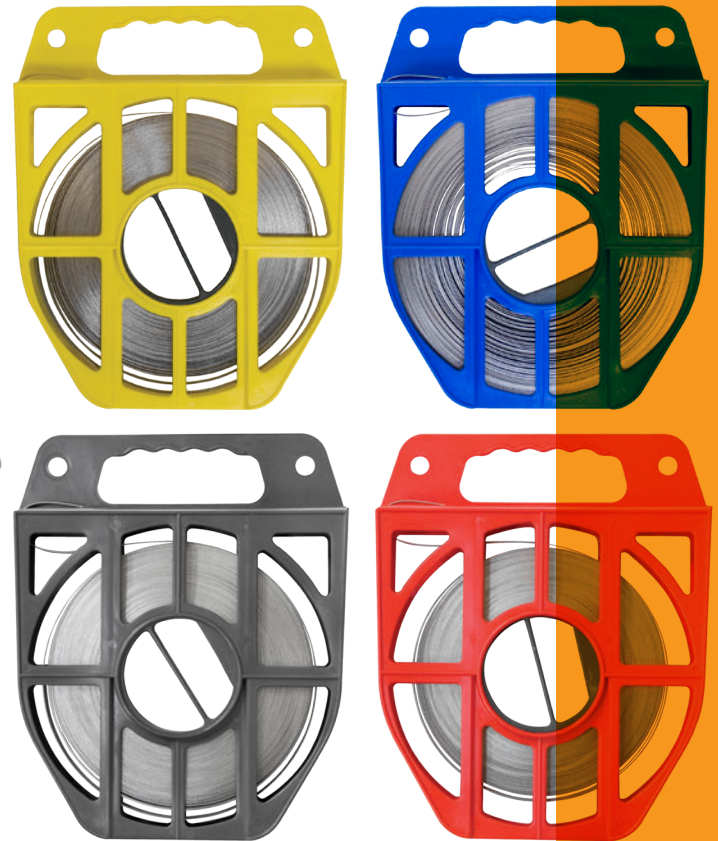
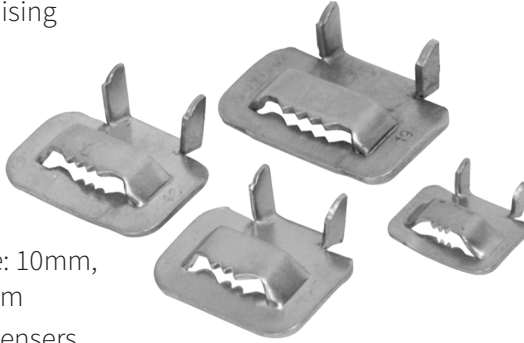
UTILUX BAND STRAP & BUCKLES

Utilux band straps and buckles are versatile, durable and easy to use. Made of stainless steel to minimise corrosion, there are four sizes available to cover a range of applications.

Strap is supplied in 30m dispensers and buckles in packs of 100.

BAND STRAP FEATURES

- Stainless steel minimising corrosion
- Versatile
- Durable
- Easy to handle
- Cost effective
- Four widths available: 10mm, 12.7mm, 16mm, 19mm
- Supplied in 30m dispensers



Cat No. Band Strap	Cat No. Buckle	Size (mm)	Reel Colour
H3013M-30/1	H3001/100	10	RED
H3016M-30/1	H3004/100	12.7	YELLOW
H3019M-30/1	H3007/100	16	GREY
H3022M-30/1	H3010/100	19	BLUE



STAINLESS STEEL CABLE TIES

Utilux Stainless Steel Cable Ties are a quick and effective way to secure cables. Much quicker than traditional strapping systems, they are available with a unique ball bearing locking mechanism that allows the tie to be easily installed and fixed. These ties have an off-set tip to

ease insertion of the tie end and are made from 316 non-magnetic stainless steel. Great for flame-proof installations, chemical environments, and situations of long-term external exposure where you need ties that last.

FEATURES

- Quick and effective
- Unique ball bearing locking mechanism
- Off-set tip

MATERIAL

- Stainless Steel 316 grade

TENSILE STRENGTH

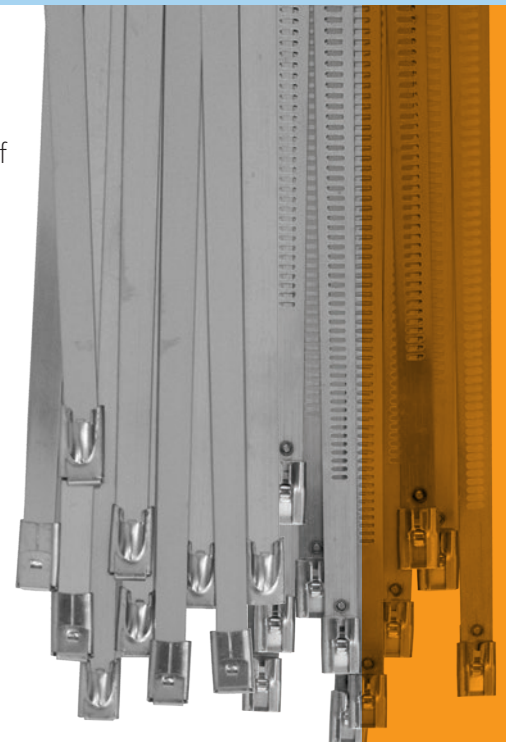
- 60kg/mm

OPERATING TEMPERATURE

- -80°C to >500°C

LOOP TENSILE STRENGTH

- Standard Range: 45kg
- Heavy Duty Range: 110kg



STANDARD LOCK

Cat No.	Length (mm)	Width (mm)
STL-335S/10	335	7

BALL BEARING LOCK

Cat No.	Length (mm)	Width (mm)
STB-152S/10	152	4.5
STB-200S/10	200	
STB-360S/10	360	





AIRSTOP WEATHER SEALS BY ISOCELL

AIRSTOP WEATHER SEALS

BY
ISOCELL
Manufactured in Germany



AIRSTOP Cable Sleeves guarantee that your construction is wind-tight and airtight. Designed to enable vapour barriers and other materials to fulfill their purpose as an airtight layer, these one piece adhesive collars are used to seal joints at cable entry points and openings for conduits in buildings. Sizes available for 8mm to 165mm diameter.

ADVANTAGES

- Extremely flexible
- Resistant to ageing
- Integrated sealing plaster for airtight adhesion
- Rubber heat-resistant up to 160°C (short term)

#AIRSTOP812	8-12MM
#AIRSTOP1522	15-22MM
#AIRSTOP2532	25-32MM
#AIRSTOP4255	42-55MM
#AIRSTOP5050	50-70MM
#AIRSTOP7590	75-90MM
#AIRSTOP100110	100-110MM
#AIRSTOP125135	125-135MM
#AIRSTOP150165	150-165MM



TRANSNET EARTH IDENTIFICATION TAG



**MADE
IN NEW
ZEALAND**



TransNet's plastic earth identification tag attaches to the main earth for easy recognition. Simple to install, the earth tag has also features UV stabilisation to give it a longer life.

FEATURES

- Easy to install
- Identify earthing connectors
- UV stabilised plastic
- Made in NZ
- Sold in packs of 100



All Specials and Products featured in TRANSNET JUICE are available from all good electrical wholesalers.





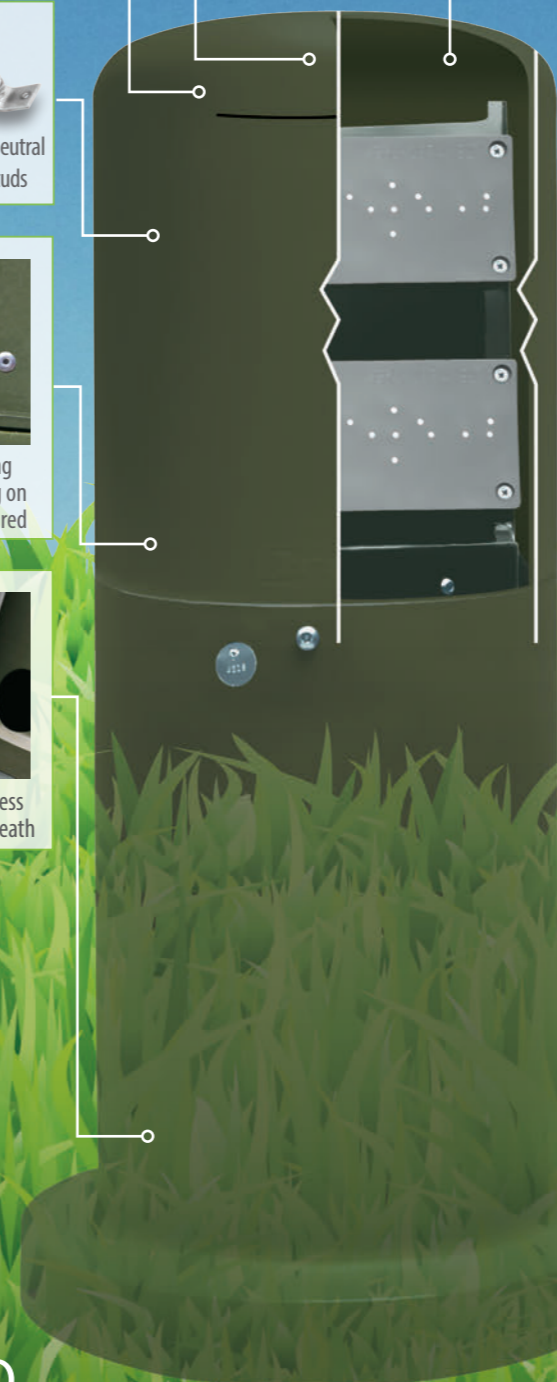
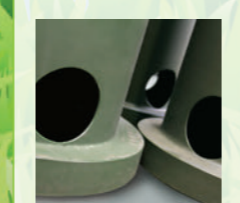
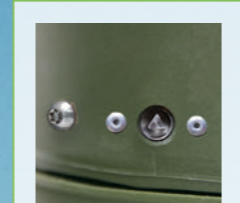
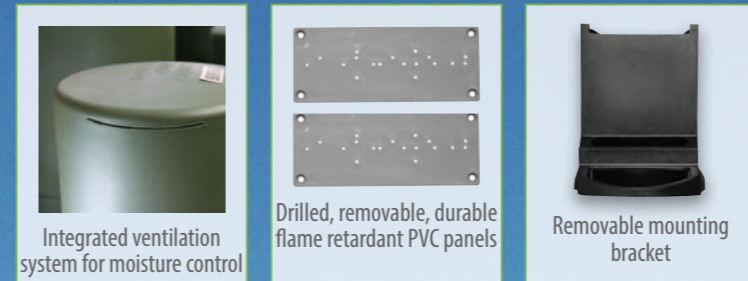
MADE
IN NEW
ZEALAND &
TAILORED
TO SUIT OUR
CONDITIONS
AN ECOPILLAR FOR EVERY
SITUATION

From slim and unobtrusive to robust and powerful, the ECO Pillar range is broad enough to accommodate residential, commercial & control applications, while flexible enough to handle customised hardware configurations.

The ECO Pillar range is an integrated system, designed by people in the industry for people in the industry.



*Other models available include the EP3EXT, EP3.5EXT, EP4TALL, EP4EXTTALL & EP6TALL. For more information please contact us.



SAFER
SIMPLER
STRONGER
ECOPILLAR
DISTRIBUTION SERVICE
PILLARS FOR LV NETWORKS

- A **fully modular system** to meet all network requirements
- Accommodates **multiple** switchgear combinations
- Recyclable
- Mechanically **robust**
- **Unique** serial number
- Made of **excellent UV stability** Rotathene 6329 repurposed plastic
- Domestic, commercial & control applications



Built from Rotathene 6329 UV stable plastic, the ECO Pillar will take the knocks and come back for more. It's designed specifically for customers who demand safety, performance and unobtrusive good looks from their electrical reticulation systems.

A unique range of fastening systems ensures protection from less civic-minded elements of the public whilst giving the technician easy access.

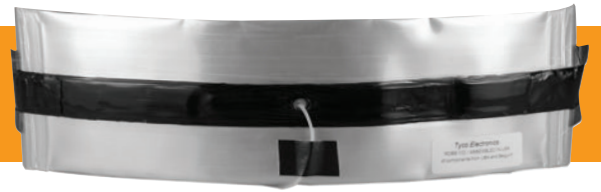
Internally, all components are specifically designed for the ECO Pillar.

Externally, ECO Pillar has a compact installation footprint. The corrosion free, environmentally friendly outer housing has a contoured design with no sharp edges. Their aesthetics make them perfect for use in new subdivisions, and with a modular design they are easy to retrofit into existing installations.



RDSS - RAYFLATE DUCT SEALING SYSTEM

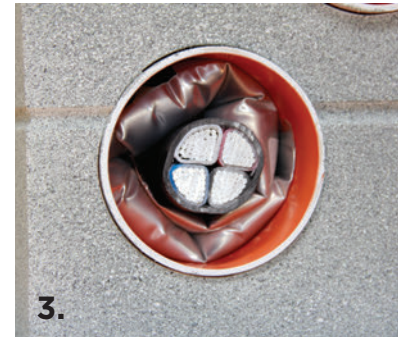
Raychem's RDSS - Rayflate Duct Sealing System is an inflatable duct sealing system created especially for sealing power cables in ducts. It is also suitable for use with communications cables.



APPLICATIONS

- For power cables
- For three or more cables, sealing clips are required
- Inflation tool is TDUX-IT-16 for purchase or hire
- Canisters of compressed air or CO₂ are compatible

- Each Rayflate seal covers a large range of cable and duct diameters
- Rayflate seals can be installed when water is still flowing out of the duct – thus saving valuable installation time
- Use not only for new cable installations but also for existing applications
- Rayflate seals can be quickly and easily removed from a duct or pipe by deflation



Installation is fast & easy:

1. Wrap the bag around the cable and ensure it is well seated in the duct before inflating.
2. Connect the inflation tool to the valve on the RDSS bag and inflate to ensure a watertight seal.
3. Finished product.

Raychem
from TE Connectivity



DUCT SEALING PLUGS

The TE Blank Duct Plug range effectively seal empty conduits. These plugs prevent the flow of water and the costly sedimentation of duct banks and conduit systems while confining problems of dangerous vapors to their source.

Manufactured from high-impact plastic components, combined with durable elastic gaskets, they are corrosion proof and effective for long-term or temporary sealing.

Equipped with a rope tie mechanism that provides the benefit of securing a pull rope to the back compression plate.

FEATURES

- All plastic construction
- Corrosion proof
- Water and gas tight
- Easy Installation and removal
- Fully removable and reusable



Raychem
from TE Connectivity



All Specials and Products featured in TRANSNET JUICE are available from all good electrical wholesalers.





#TNVSCANS-KIT

Standard Pipe & Cable Locator Kit

VSCAN FEATURES

- Compass (line direction indicator)
- Self-test and calibration verification
- Data logging & data management software

Removable loudspeaker - output limited to HSE safety levels

Peak level indicator

Compass (line direction indicator)

High contrast display with backlight

Push buttons on/off and menu activation



TRANSMITTER

Output status lights

Speaker volume control

Switch - pulse/continuous output

Output level select



#TNVSCANM-KIT

Pipe & Cable Locator Kit with Metal Detector

- Configuration utility - personalise your vScan
- Bluetooth & GPS models available (enquire when ordering)
- Metal detection (TNVSCANM-KIT only)

RECEIVER

Vibrate alert

Internal loudspeaker

Rotary gain/sensitivity control

Paddle - navigation/select

Rugged ABS housing with protective bumpers

Battery housing for alkaline or Lithium ion battery packs

USB socket - programming/data transfer



MODES

Power mode

Radio mode

Active modes 33Hz & 131kHz

Sonde mode (33Hz)

Metal locate mode (vScanM only)



**VIVAX
METROTECH**

BRAVE THE ELEMENTS

Pop'N'Work Tents & Umbrellas



TransNet New Zealand Ltd

Auckland

78 Cryers Road
East Tamaki
Auckland
NEW ZEALAND
Ph 0800 442 182
Fax 0800 442 183
PO Box 39 383
Howick, Auckland

Wellington

18 Sydney Street
Petone
Wellington
NEW ZEALAND
Ph 04 576 2530
Fax 04 576 0040
PO Box 39 383
Howick, Auckland

NEW ZEALAND

sales@transnet.co.nz

TransNet Tonga

Ma'ufanga

Small Industries
Ma'ufanga
TONGA
Ph +67 627 939
Fax +67 627 976
PO Box 2932
Nukualofa

TONGA

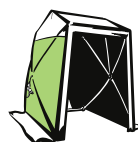
transnet@kalianet.to

NEW AGENCY

Flame retardant

UV stable

Customisable
design/colours/
branding



POP'N'WORK

Industrial Pop-Up Shelters & Umbrellas for Weather Protection



Pop'N'Work offers a complete line of quick and easy pop-up work shelters. The high quality and durability of these products is unsurpassed!

With the design flexibility to meet specific client needs we have the ability to provide you with a truly customised, quality product.

Customisations include branding with your logo or changing to your colours (MOQ required).

Job safety and productivity are top level concerns for any business, and these products offer features that help to increase production levels while providing a safer working environment!



TransNet NZ Ltd has made every reasonable effort to ensure the accuracy of this information and it is to the best of our knowledge correct and reliable. Under no circumstances does this constitute an assurance of any particular quality or performance and users should independently evaluate the suitability of products for their desired application. All information in this publication including pricing, drawings, illustrations, images and graphic designs are reflections of our current understanding. TransNet NZ Ltd reserves the right to make any adjustment to this information at any time. Our liability for the products outlined in this publication is set forth in our standard terms and conditions of trade. In case of any potential ambiguities or questions, please contact us for clarification.